



SPRING SUMMER 2023 春夏趋势

intertextile
SHANGHAI apparel fabrics

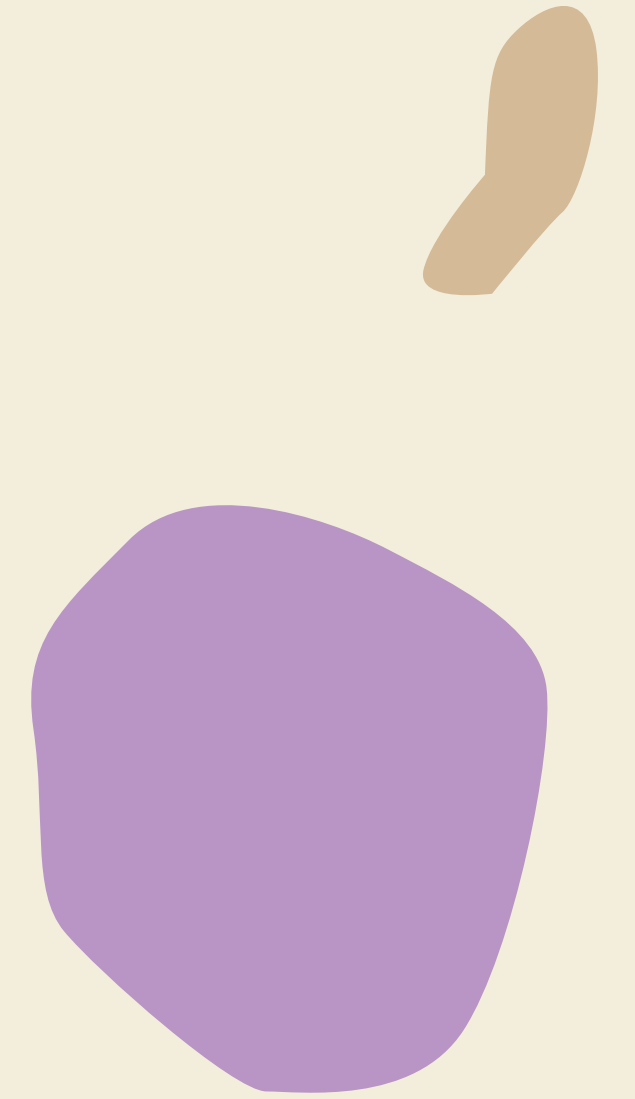


CONNECTED 连结

SPRING SUMMER 2023 春夏趋势

A beautiful, interwoven web of **C**ommunity and **N**ature, enhanced through **T**echnology. We have finally found the togetherness we have been looking for. In a seemingly hyper-connected world, how did we become so disjointed? There has grown a widespread craving for intimacy and closeness. Trusting our inner intuition, we seek authenticity in every aspect of life. The pursuit of finding meaning leads us to look within, around, and beyond ourselves. It is then that we realise - what is more magnificent than our people, our planet, and our prowess?

一个美丽的、交织在一起的**社群**和**自然**网络，透过**科技**获得提升。我们终于找到寻求已久的紧密连结。在这个看似高度连结的世界中，我们是如何变得如此疏离的？亲密和亲近是大众与生俱来所渴望的。相信我们内心的直觉，我们在生活的各个方面寻找真实性。对意义的追求引导我们审视自身和四周，同时超越自我。然后，我们便意识到—有什么比我们的自身、我们的地球和我们的英勇无畏实力更壮丽呢？



BIO-CLARITY

生物-清澈



NATURAL-HARMONY

自然-和谐



VIRTUAL-ENERGY

虚拟-能量



EARTH-CELEBRATION

地球-庆典



BIO-CLARITY

In the deepest part of our soul, we recognise the innate desire for inner balance. We roam the land and explore the mind in search of peace and purity. Nature's nurturing touch shows us a path, where we discover serenity in her quiet sanctity. Finally, mind, body and heart are in unison, with man and earth in perfect harmony.

COLOURS

immaterial | calm |
natural | light

Austere and luminous pastels
blend with romantic floral tones,
forming a serene range of
shades that inspire sensitivity
and simplicity.

PANTONE® 11-0601

PANTONE 13-0607

PANTONE 11-0609

PANTONE 13-4404

PANTONE 12-0104

PANTONE 14-3907

PANTONE 12-5403

PANTONE 14-1310

PANTONE 14-3905

PANTONE 14-0116

PANTONE 13-3405

PANTONE 15-3412

颜色

无形 | 平静 | 自然 | 浅淡
朴素而明亮的粉彩与浪漫的花
卉色调融合，形成一系列宁静
的色调，启发了敏锐而又
简约的美感。

生物-清澈

在我们灵魂的最深处，我们认识到对内在平衡的固有渴望。我们漫游大地，探索心灵，寻求和平与纯洁。大自然的呵护触碰向我们展示了一条道路，让我们在她安静的圣洁中发现宁静。最终，心、身、灵合而为一，人与天地完美而和谐地共存。

BIO-CLARITY

FABRICS

feminine | simple |
pure | delicate

Delicate fabrics shine in sheer
chiffons and organzas, light voiles
and tulle, and flowy georgettes
and crepes. Fine linens and silks
feel dreamy, while fragile laces
and burnout finishes add
romance. Printed clouds and
aerial designs feel femme
and fairytale-like.



面料

女性化 | 简单 | 纯洁 | 精致
精致的面料在透明雪纺和欧根纱、
轻薄的薄纱和绢网，以及飘逸的乔
其纱和绉纱中熠熠生辉。优质亚
麻布和丝绸让人感觉梦幻，而脆弱
的蕾丝和烧花饰面则增添了浪漫
气息。云彩和天空的印花图案
给人一种女性化和童话
般的感觉。

生物-清澈



BIO-CLARITY

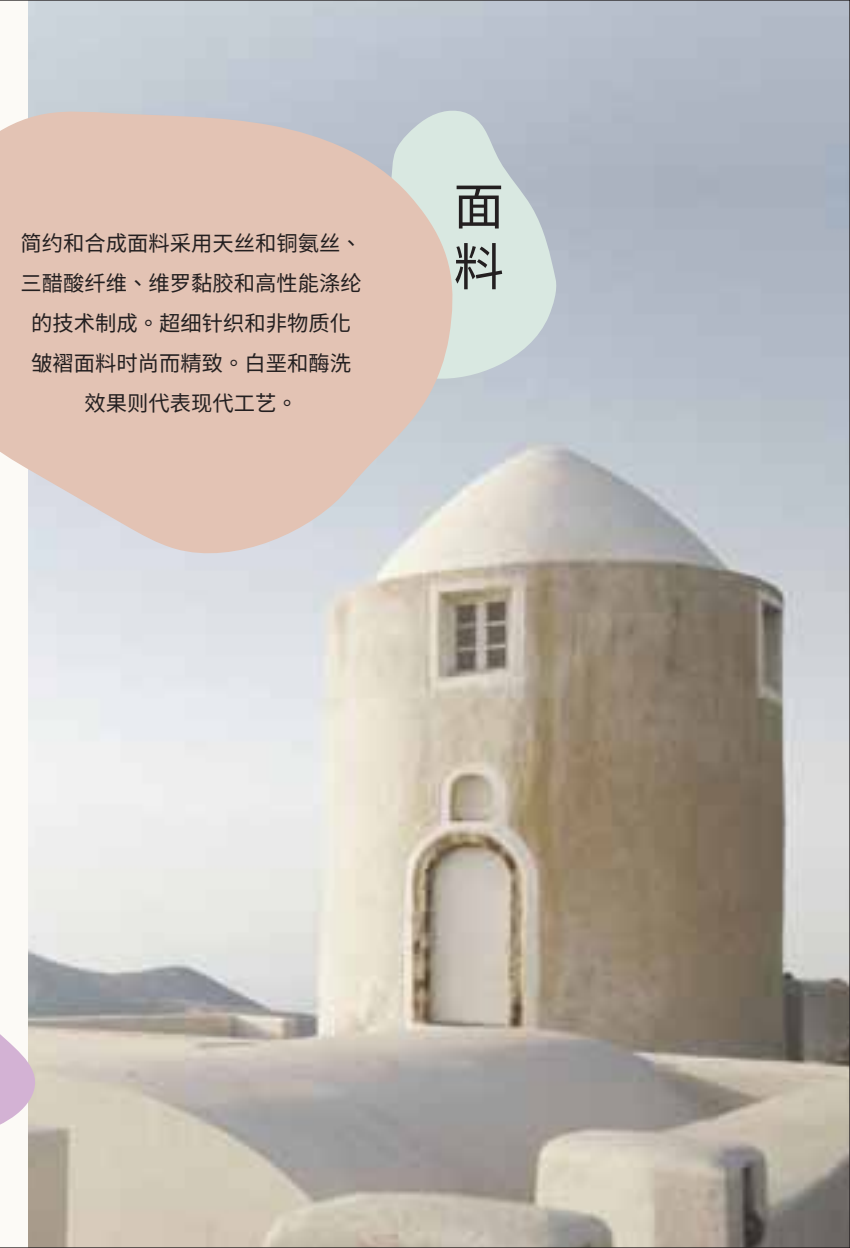


简约和合成面料采用天丝和铜氨丝、三醋酸纤维、维罗黏胶和高性能涤纶的技术制成。超细针织和非物质化皱褶面料时尚而精致。白垩和酶洗效果则代表现代工艺。

面料



生物-清澈



FABRICS

Simplistic and synthetic fabrics take a technical route with Tencel and Cupro rayons, triacetates, vero viscose, and performance polyesters. Ultra-fine jerseys and dematerialised plissés are sleek and sophisticated. Chalky effects and enzyme washes are modern.

NATURAL – HARMONY

There's nothing quite like the charm of countryside living. Let us revel in nature – her fragrant floral fields, vibrant vegetable gardens, and rustic rural landscapes. We blend old and new, natural and man-made to create an eco-urban way of life, lived in all the goodness that this earth has to offer. Come along as we enjoy her luscious fruits!

COLOURS

spontaneous | bucolic |
refreshing | organic

Fruity and floral pops add vibrance
as botanical, natural neutrals
stabilise this balanced palette
in celebration of nature's
wonders.

PANTONE® 11-0620

PANTONE 15-1218

PANTONE 14-0226

PANTONE 15-3932

PANTONE 15-5218

PANTONE 16-0421

PANTONE 16-1541

PANTONE 16-5917

PANTONE 16-1620

PANTONE 16-1342

PANTONE 16-3520

PANTONE 17-1147



自然 – 和谐

没有什么能比得上乡郊生活的魅力。让我们陶醉于大自然之中—芬芳的花田、生机勃勃的菜园，还有质朴的乡村景致。我们将新与旧、天然与人造融合以创造一种生态城市的生活方式，活在地球所提供的所有美好之中。快来和我们一起享受大自然的甜美果实吧！

颜色

自发 | 田园 | 清新 | 有机
果香和花香增添了活力，
以天然植物中性稳定了这个
平衡的调色板，仿似庆祝
大自然的奇迹。



NATURAL – HARMONY

FABRICS

playful | natural |
sustainable | eco-conscious
Sustainability goes playful with
crafted yarn-dyes and multi colour
stripes, digital prints and sinuous
jacquards, fun florals and calico
prints. Packable performance
nylons, compact gabardines, light
poplins, blended acetates, stretch
chinos and simple weaves form
the foundation.



自然 – 和谐



面料

玩味 | 自然 | 可持续 | 环保
可持续发展与匠心独运的纱线染料
和多色条纹、数码印花和蜿蜒提花、
有趣的花卉和棉布小碎花印花布相得
益彰。可折叠的高性能尼龙、紧密
编织的华达呢、轻府绸、混纺
醋酸纤维、弹力斜纹棉布和
简单的编织构成了面料
款式的基础。

NATURAL – HARMONY

FABRICS

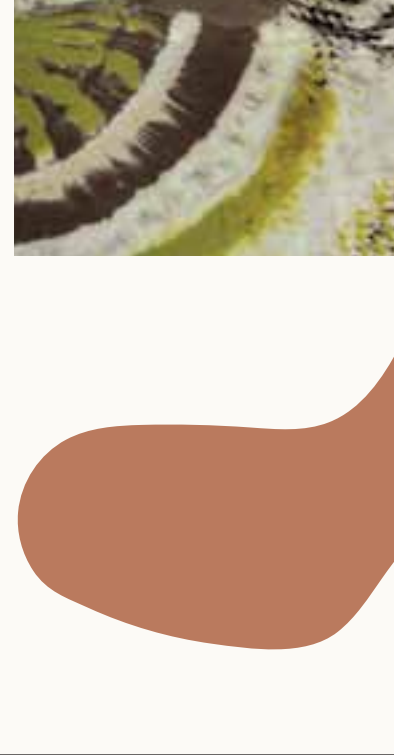
Eco-friendly fabrics are key in organic cotton, linen and hemp. Crochet and modern lace add texture, while delicate jerseys and pointelle knits feel flowy. Natural pigment dyes, eco washes and biodegradable denims make a statement.



面料

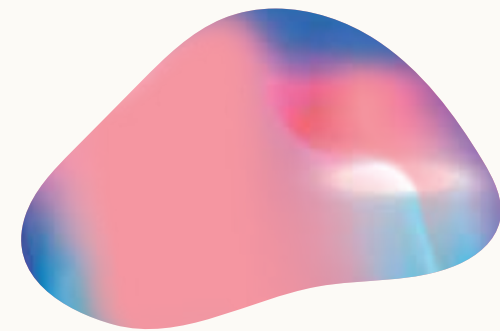
环保面料的关键是有机棉、亚麻和麻织物。钩针编织和现代蕾丝增添了质感，而精致的平针织和圆点针织则给人飘逸的感觉。天然颜料染色、环保水洗和可生物降解的牛仔布就像是一份环保声明。

自然 – 和谐



VIRTUAL- ENERGY

The future is here, and it is now. Virtual becomes reality as our digital and physical lives morph to create a high-tech existence beyond our wildest imaginations. Self-expression skyrockets in a new world fueled by dynamic innovation at supersonic speeds. Do you dare to dream? Turn on the power – in this new age, anything is possible!



COLOURS

dynamic | invigorating |
saturated | primary

Illusionary worlds, digital dynamism
and outer-space wonder collide
in a gamut of shimmering
crypto-tones and explosive
artificial brights.

PANTONE® 13-1031

PANTONE 18-1764

PANTONE 12-4608

PANTONE 17-2033

PANTONE 12-0741

PANTONE 17-5130

PANTONE 14-0955

PANTONE 17-6153

PANTONE 15-1717

PANTONE 19-4151

PANTONE 15-4825

PANTONE 19-4203

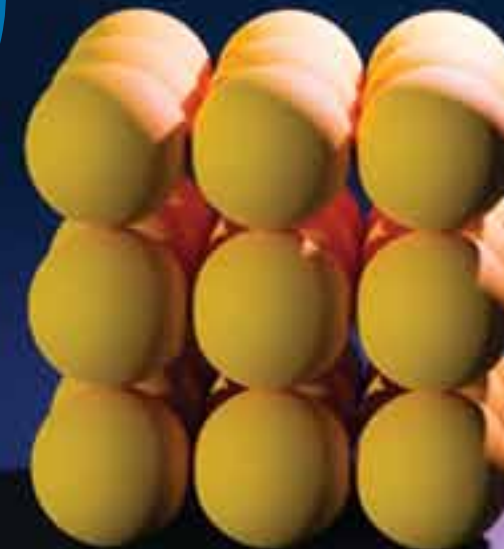


虚拟-能量

未来就在这里，就是现在。虚拟成为了现实，随着我们数码和现实生活的变形而创造超出我们最疯狂想像的高科技存在。自我表达在一个以动态创新为动力的新世界中超音速飙升。你敢做梦吗？启动能量 — 在这个新时代，一切皆有可能！

颜色

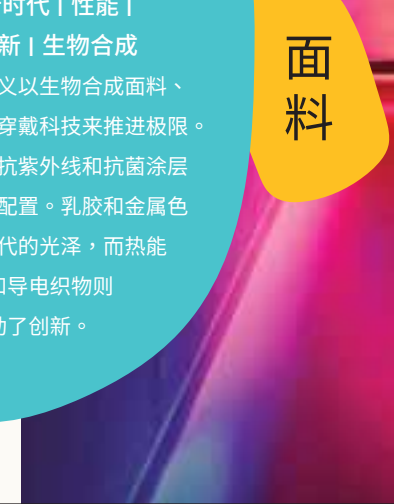
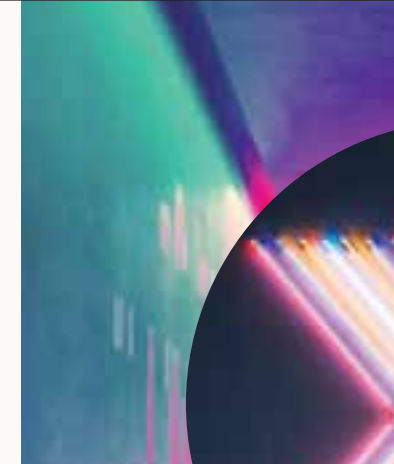
动态 | 振奋 | 饱和 | 基础
虚幻的世界、数码活力主义和
外太空奇观，在闪烁的暗调
和爆炸性的人造亮光色域
中互相碰撞。



VIRTUAL- ENERGY

FABRICS

new age | performance |
innovate | bio synthetics
New-age futurism pushes the
limit with bio synthetics, smart textiles,
and wearable technology. Waterproof,
cooling, anti-UV and antibacterial
coatings are now standard. Latexes
and metallics add ultramodern shine,
while thermochromic and
conductive fabrics drive innovation.



虚拟-能量

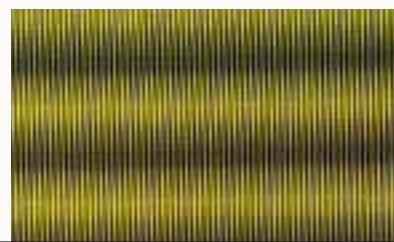
新时代 | 性能 |
创新 | 生物合成
新时代未来主义以生物合成面料、
智能纺织品和可穿戴科技来推进极限。
防水、降温、抗紫外线和抗菌涂层
现在已是标准配置。乳胶和金属色
增添了超现代的光泽，而热能
变色和导电织物则
推动了创新。

面料

VIRTUAL- ENERGY

FABRICS

Sports and leisure go to the next level of comfort in compact interlocks, elastic jerseys and French terry, including honeycomb & piqué knits. Stretch twill and coloured denim makes a comeback. Digital art, dynamic graphics, black & white geometrics, and virtual fractal prints are punchy.



虚拟-能量



面料

紧密的棉毛布、弹性平针织和毛圈布，包括蜂窝和珠地针织物，让运动和休闲的舒适提升到更高的层次。弹力斜纹布和彩色牛仔布卷土重来。数码艺术、动态图形、黑白几何图形和虚拟分形印花都非常有冲击力。

EARTH- CELEBRATION

The earth is our home, and she has sheltered us kindly. We rejoice in our shared soil, water, air, and land; and pay homage to these life-sustaining resources. As she heals and nourishes, we come together in celebration of culture and community, discovering the delight of our diversity. Let us feast in the variety and abundance of nature and her people!

COLOURS

tropical | authentic |
natural | earthy

A rich array of organic tones
extracted from exotic vegetation
and tropical flowers form a
complex range of zesty bursts
and mellow darks.

PANTONE® 17-1545

PANTONE 19-2024

PANTONE 16-5421

PANTONE 18-1148

PANTONE 15-1142

PANTONE 18-1540

PANTONE 18-3230

PANTONE 18-0430

PANTONE 17-4540

PANTONE 17-1330

PANTONE 18-0130

PANTONE 17-3923



地球－庆典

地球是我们的家，友善地守护我们。我们为共享的土壤、水、空气和大地而欢欣鼓舞；并向这些赖以生存的资源致敬。当地球得到治愈和滋养时，我们聚在一起为文化和社群庆祝，并发现我们多样性的乐趣。让我们尽情享受大自然及其子民的多样性和丰富性吧！

热带 | 真实 |

自然 | 大地色系

朴素而明亮的粉彩与浪漫的花卉

色调融合，形成一系列宁静的

色调，后发了敏锐而又

简约的美感。

颜色

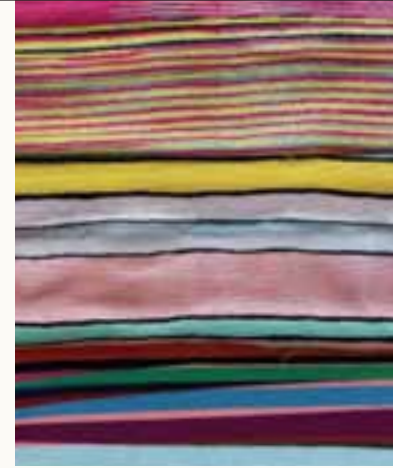


EARTH- CELEBRATION

FABRICS

rustic | refined |
artisanal | environmental

Rustic refinement is at the forefront
with a myriad of natural fibres including
marled and mélange linens and hems.
Panama weaves, handlooms, variegated
stripes, yarn-dyes and madras plaids
feel very earthen and natural.
Geo ethnic art, mosaics and tiles
add visual inspiration.



面料

质朴 | 精致 | 手工艺 | 环保

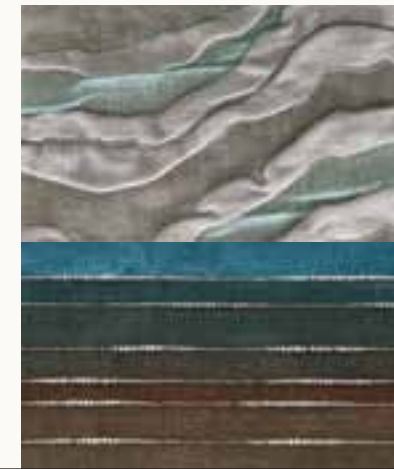
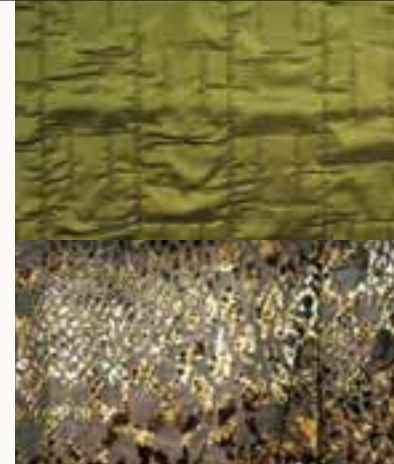
无数的天然纤维，包括双色和混色亚麻布和大麻布，使质朴的精致最先映入眼帘。巴拿马编织、手摇织机、杂色条纹、色织和马德拉斯格子布感觉非常朴实和自然。地理民族艺术、马赛克和瓷砖增添了视觉灵感。

地球-庆典

EARTH- CELEBRATION

FABRICS

Artisanal handiwork such as crochet knits and flame stitches, tonal jacquards, and patchwork fabrics stand out. Needle point embroidery, enamel finishes, floret collages and blurred effects are crafty touches. Botanical dyes, Shibori and pigment prints feel organic and sustainable.



地球-庆典

面料

手工艺制作如钩针编织和火焰针法、同色调提花和拼布面料等脱颖而出。针尖刺绣、珐琅饰面、小花拼贴和模糊效果都是巧妙的手法。植物染色、日本绞染和颜料印花感觉有机而可持续。



BIO-CLARITY

生物-清澈

PANTONE® 11-0601	PANTONE 11-0609	PANTONE 12-0104
PANTONE 12-5403	PANTONE 14-3905	PANTONE 13-3405
PANTONE 13-0607	PANTONE 13-4404	PANTONE 14-3907
PANTONE 14-1310	PANTONE 14-0116	PANTONE 15-3412

NATURAL-HARMONY

自然-和谐

PANTONE® 11-0620	PANTONE 14-0226	PANTONE 15-5218
PANTONE 16-1541	PANTONE 16-1620	PANTONE 16-3520
PANTONE 15-1218	PANTONE 15-3932	PANTONE 16-0421
PANTONE 16-5917	PANTONE 16-1342	PANTONE 17-1147

VIRTUAL-ENERGY

虚拟-能量

PANTONE® 13-1031	PANTONE 12-4608	PANTONE 12-0741
PANTONE 14-0955	PANTONE 15-1717	PANTONE 15-4825
PANTONE 18-1764	PANTONE 17-2033	PANTONE 17-5130
PANTONE 17-6153	PANTONE 19-4151	PANTONE 19-4203

EARTH-CELEBRATION

地球-庆典

PANTONE® 17-1545	PANTONE 16-5421	PANTONE 15-1142
PANTONE 18-3230	PANTONE 17-4540	PANTONE 18-0130
PANTONE 19-2024	PANTONE 18-1148	PANTONE 18-1540
PANTONE 18-0430	PANTONE 17-1330	PANTONE 17-3923

DIRECTIONS TREND COMMITTEE

Since its foundation in 1998, the *Directions* Trend Committee has provided an invaluable research and marketing tool to designers and garment professionals, helping them steer their designs and manufacturing process in line with coming fashion seasons. The committee comprises of top trend forecasters, selected by Messe Frankfurt (HK) Ltd based on their knowledge and wide experience in all fields of fashion. They come from cities considered the fashion capitals of the major export markets for international garment trade: New York, Milan, Paris and Tokyo. Each season, the committee members combine their expertise and local influences to come up with the themes that tell the story of tomorrow's apparel fabric trends.

TOBE TDG BY THE DONEGER GROUP – NEW YORK, USA

TOBE TDG is a leading forecasting and creative consultancy at the intersection of lifestyle and commerce. TOBE TDG is a special operation team for great companies, delivering business and creative strategies on branding & positioning, consumer engagement, merchandising & curation, design direction, and marketing & messaging. Its deep market intelligence informs one of the most exceptional forward-thinking and leverageable content platforms. Kai Chow, Creative Director of TOBE TDG, leads a team of forecasters, concept designers, trend analysts and branding strategists to inspire and guide clients through designing products and brands that make an impact.
tobetdg.com

SACHIKO INOUE – TOKYO, JAPAN

Sachiko Inoue graduated from the International Design and Art Institution in 1971, then worked for various textile companies as a fashion and textile forecaster. Currently, she offers consulting services, including trend forecasts and individual guidance for several key material producers, trading firms, converters and fabric manufacturers in Japan. She has also been involved in directing JFW (Japan Fashion Week Organization)/Textile Div. in the trend forecasting and textile consulting field in both Japanese and overseas fairs.

ELEMENTI MODA – MILAN, ITALY

Elementi Moda is a forecasting and creative company which focuses on lifestyle evolution and consumer trends, offering customised consulting for the textile industry, the fashion system and home interiors from the idea to innovative products. Elementi Moda provides trend conferences for international apparel companies and educational training for International Fashion and Design Institutes. It also provides extensive research and development services for commercial textile products: from fibres, yarns to fabrics and knitwear. Creative Director Ornella Bignami is a specialist in fibres, colours, yarns and fabric developments for fashion and home, and is a member of International Trend Committees.
www.elementimoda.it

NELLYRODI™ AGENCY – PARIS, FRANCE

Founded in Paris in 1985, NellyRodi is an expert strategic consulting agency for the creative industries. Today based in Paris, Shanghai, Tokyo and New York, it is an international reference for forecasting the industrial and service sectors. NellyRodi helps businesses, brands, investment funds and collective organisations, their decider and their teams, from defining their brand strategy all the way to operational deployment. NellyRodi has been established in China since 2002, and Michael Bonzom is the Asia creative director.
www.nellyrodi.com

潮流导向委员会

潮流导向委员会自1998年成立以来，一直致力为设计师及纺织业专才提供宝贵的市场研究及推广工具，协助他们紧贴未来的时装潮流而进行设计及生产。委员会成员由法兰克福展览（香港）有限公司挑选，均为首屈一指的潮流预测专家，于各个时装领域掌握丰富的知识和经验。各成员来自世界各地的时尚之都，遍布欧洲、亚洲及美国等全球主要成衣出口市场。每一季，委员会都会结合彼此的专业知识和地区实力，以鲜明的主题刻画未来潮流及时装材料趋势。

TOBE TDG BY THE DONEGER GROUP – 美国纽约

TOBE TDG 是生活品味及商业界首屈一指的策划及创作顾问公司。TOBE TDG 是一个为各大企业打造的特殊运营团队，在品牌定位、顾客契合、营销和策划、设计方向以及营销和信息传递方面提供商业和创意战略。其深入的市场情报为其其中一个最杰出、具前瞻性的可利用内容平台提供信息。TOBE TDG 的创作总监 Kai Chow 带领着一群出色的市场前瞻者、概念设计师、潮流分析师和品牌策划师，透过设计产品及品牌，启发及指导客户塑造具影响力的市场策划。
tobetdg.com

井上佐知子 – 日本东京

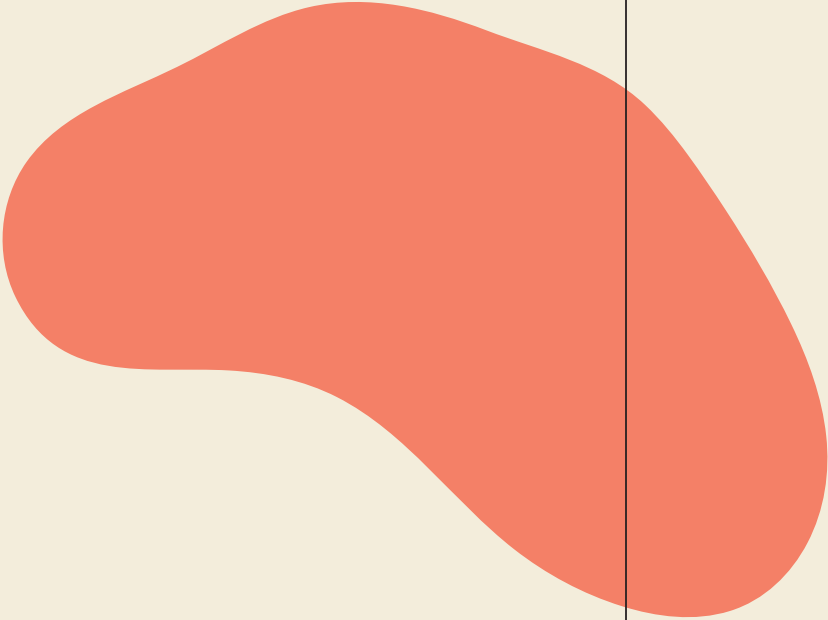
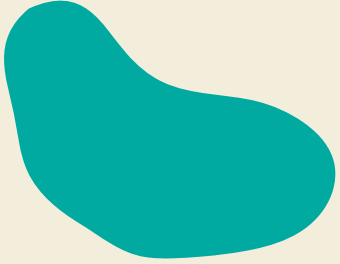
井上佐知子在 1971 年毕业于国际设计及艺术学院 (International Design and Art Institution)，随后于多家纺织品公司担任时尚及纺织品潮流预测专家。现时身兼专业顾问，为日本多家重要的时装材料生产商、贸易公司、加工批发商及布料生产商，提供潮流预测及顾问服务。她同时亦领导 JFW (Japan Fashion Week) 纺织品组别的事务，为日本及海外展览会进行潮流预测及担任纺织面料顾问。

ELEMENTI MODA – 意大利米兰

Elementi Moda 是一家专注于生活方式改变和消费趋势的预测和创意公司，为纺织行业、时尚系统、家居室内设计提供定制咨询。涵盖创意至产品创新。Elementi Moda 为国际服装公司提供趋势分析讲座，并为国际时装和设计学院提供教育培训。此公司亦提供广泛的商业纺织产品研究及开发服务，包括纤维、纱线、布料及针织。其创意总监 Ornella Bignami 是纤维、色彩、纱线、时装布料及家用布料发展方面的专家，也是国际趋势委员会的成员。
www.elementimoda.it


NELLYRODI™ AGENCY – 法国巴黎

1985 年于巴黎成立，NellyRodi 是一间专业的创意产业战略咨询机构。时至今日，于巴黎、上海、东京及纽约均设有办事处，有助以国际视野预测业界趋势及提供服务。NellyRodi 帮助企业、品牌、投资基金和集团机构、他们的决策者及团队，从定义他们的品牌战略一直到运营部署。NellyRodi 自 2002 年起已在中国设立办事处，而 Michael Bonzom 是现时的亚洲创意总监。
www.nellyrodi.com



Visit the Trend Forum at
Intertextile Shanghai Apparel Fabrics – Spring Edition
National Exhibition and Convention Center (Shanghai)

请莅临参观流行趋势区
中国国际纺织面料及辅料(春夏)博览会
国家会展中心(上海)



For further information please contact
Messe Frankfurt (HK) Ltd.
35/F, China Resources Building
26 Harbour Road, Wanchai, Hong Kong
textile@hongkong.messefrankfurt.com
www.messefrankfurt.com.hk

有关详情请联络
法兰克福展览(香港)有限公司
香港湾仔港湾道26号华润大厦35楼
textile@hongkong.messefrankfurt.com
www.messefrankfurt.com.hk

