

## OFFICIAL HOTEL DESCRIPTION

### 1. InterContinental Shanghai NECC



1700 Zhuguang Road, Shanghai



Located in the heart of Shanghai Hongqiao CBD, the hotel is the only luxury hotel in the dazzling National Exhibition and Convention Center (Shanghai). The hotel is just 8 kilometers from Hongqiao International Airport and adjacent to the Hongqiao transportation hub. It is also just steps away from Metro Line 2, which is connecting guests to all of Shanghai's commercial districts. The hotel features 536 contemporary guestrooms, four eclectic restaurants and lounges, a luxury spa and an indoor pool.

It takes 5 minutes to the exhibition venue on walk .

60 minutes from Pudong Int'l Airport and 25 minutes from Hongqiao Int'l Airport by car.

### 2. Sofitel Shanghai Hongqiao



666 Taihong Road, Shanghai



Located just minutes from the NECC convention center and 5 minutes from the Hongqiao transport hub, Sofitel Shanghai Hongqiao is a Parisian inspired inner city oasis featuring 354 opulent guest rooms and suites with our signature Sofitel MyBed. An exciting gastronomy experience awaits with our 3 restaurants and 2 bars. Rejuvenate in our SoSPA, work up a sweat at SoFIT wellness center or have a meeting in one of our modern function rooms.

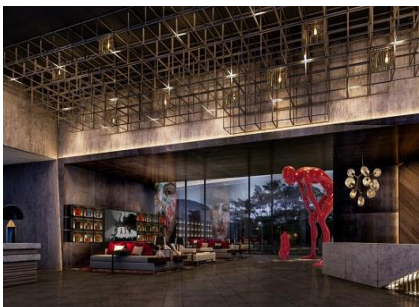
It takes 7 minutes to the exhibition venue by taxi. Taxi fare is around RMB 15.

60 minutes from Pudong Int'l Airport and 10 minutes from Hongqiao Int'l Airport

### 3. MiniMax Premier Hotel Shanghai Hongqiao



505 Fuquan Bei Road, Shanghai



The MiniMax Premier Hotel Shanghai Hongqiao is located in Hongqiao Economic Zone, the Greatest IBP Industry Area and Hongqiao Business Circle, the zone shuttle bus can get access to the hotel directly. It is only 7 minutes walking distance from subway line 2 Songhong Road station, and 10 minutes from Shanghai Hongqiao Airport to National Exhibition and Convention Center (Shanghai) by car.

It takes 20 minutes to the exhibition venue by taxi. Taxi fare is around RMB 40.

60 minutes from Pudong Int'l Airport and 20 minutes from Hongqiao Int'l Airport by car.

4. **Renaissance Yangtze Shanghai Hotel**



2099 Yan'an Xi Road, Shanghai



Located in the heart of Hongqiao, Shanghai upscale business district, Renaissance Yangtze Shanghai Hotel is your home away from home. For meetings and conferences, the hotel offers 22 stylish function rooms, all equipped with the latest meeting solutions technology including a Grand Ballroom. Be it for business or pleasure, the hotel offers an impressive array of first-class facilities and inventive catering solutions. With 5 award-winning restaurants and 2 lounges, indulge yourself with gastronomic temptations ranging from classical Chinese cuisine to modern Western fusion. The Renaissance Yangtze Shanghai Hotel delightfully indulge every business and leisure guest in unparalleled stay experience by combining Savvy Service with a home away from home feel.

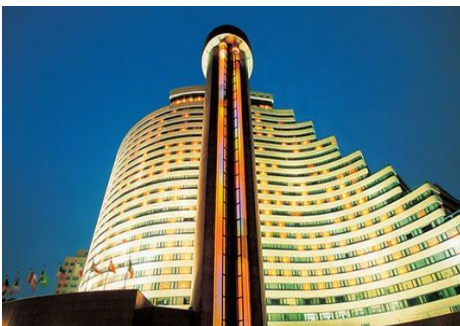
**It takes 35 minutes to the exhibition venue by taxi. Taxi fare is around RMB 50.**

**60 minutes from Pudong Int'l Airport and 30 minutes from Hongqiao Int'l Airport by car**

5. **Hua Ting Hotel & Towers**



1200 Caoxi Bei Road, Shanghai



Situated in Shanghai's lively Xujiahui business and shopping district, the Huating Hotel & Towers is an exquisite combination of luxury and convenience where guests can enjoy lavish accommodation, a wide range of quality restaurants and excellent transportation links. A Western-style deli, the Super Bowl Deli, ensures guests can also get their sandwich fix with a range of delicious meats and cheeses available. The Lobby Lounge and Peace Old Jazz offer live music and drinks—a great way to start, or end the evening. Another highlight is the Clark Hatch Health Club with such relaxing facilities as an indoor pool, sauna and steam room.

**It takes 40 minutes to the exhibition venue by taxi. Taxi fare is around RMB 60.**

**50 minutes from Pudong Int'l Airport and 40 minutes from Hongqiao Int'l Airport by car.**

6. **Courtyard by Marriott Hongqiao**



333 Panwen Road, Shanghai



Located in the west side of Hongqiao CBD,,Courtyard by Marriott Shanghai Hongqiao is situated adjacent to the National Exhibition Convention & Center.With public transportation,the hotel is a fixture that will drive the business and commercial development of Qingpu District.

Only 5 minutes down the road is the National Convention & Exhibition Center.Hotel shuttle service is available to exhibition guests.

Also down the road is East Xujing Station,terminus station for Metro Line 2, Linking visitors directly to People's Square and Lujiazui Financial District, as well as Pudong International Airport.With so much easy access to the rest of

the country and the world,it is safe to say Hongqiao has the potential to blossom into a world-class business center.

**It takes 5 minutes to the exhibition venue by taxi. Taxi fare is around RMB 15.**

**60 minutes from Pudong Int'l Airport and 25 minutes from Hongqiao Int'l Airport by car.**

7. **Hyatt Place Shanghai Hongqiao CBD**



9 Shenhong road, Shanghai



Hyatt Place Shanghai Hongqiao CBD, is an ultramodern 252 guest room property providing ideal accommodations for anyone visiting Shanghai, whether it is for business or leisure. The site is strategically located in the heart of Shanghai Hongqiao CBD with just steps away from National Exhibition and Convention Center (Shanghai) and Hongqiao Transportation Hub combining Hongqiao International Airport, High-speed railways, Metro Line 2 and 10, long-distance passenger transportation, ground buses and taxis. Hyatt Place Shanghai Hongqiao CBD is perfect place to host your executive meetings, family parties, event dinners and more. Your dedicated Meeting Host

will tend to every last detail when using our Meeting Place. Hyatt House Shanghai Hongqiao CBD - Hyatt's first extended stay hotel in Shanghai opening Fall 2017 features your choice of residential-like suite or spacious studio hotel rooms, which are ideal for busy professionals, project teams and family travelers who don't want to sacrifice the comforts of home.

**It takes 7 minutes to the exhibition venue by taxi. Taxi fare is around RMB 15.**

**70 minutes from Pudong Int'l Airport and 15 minutes from Hongqiao Int'l Airport by car.**

8. **Howard Johnson Hongqiao Airport Hotel**



1989 Huaxiang Road, Shanghai



The Howard Johnson Hongqiao Airport Hotel Shanghai is located just opposite Hongqiao Int'l Airport Terminal 2. This Shanghai hotel offers a range of rooms from singles to suites. Like the rest of the hotel, rooms are furnished and designed in a classy, yet modern fashion, updated with the latest amenities including free Wi-Fi. Also offered to guests is a free continental breakfast buffet, sure to help guests start off the day right. On-site restaurants serve Western and Asian dishes: the Jingyuan Restaurant specializes in Cantonese cuisine and seafood dishes, while the Modern Western Restaurant serves its respective cuisine. When guests want to take a break from their busy schedule, they can take advantage of the gym for a

little exercise or go to the spa or salon to be pampered.

**It takes 10 minutes to the exhibition venue by taxi. Taxi fare is around RMB 15.**

**70 minutes from Pudong Int'l Airport and 10 minutes from Hongqiao Int'l Airport by car.**

9. **Holiday Inn Shanghai West**



2000 Huqingping Road, Shanghai



The Holiday Inn Shanghai West (Shanghai Xijiao Jiari Jiudian) is located near the Metro Line 2's East Xujing station and a ten-minute drive from Hongqiao International Airport under normal traffic condition. The Holiday Inn has contemporarily designed guest rooms which feature high speed broadband and wireless internet access, LCD TVs with satellite channels, international direct dial phones and voicemail, in room safes, hairdryers, mini bars.

**It takes 15 minutes to the exhibition venue by taxi. Taxi fare is around RMB 20.**

**80 minutes from Pudong Int'l Airport and 15 minutes from Hongqiao Int'l Airport by car.**

**10. Hilton Garden Inn Shanghai Hongqiao**



**1915 Huqingping Road , Shanghai**



Hilton Garden Inn Shanghai Hongqiao is close to Shanghai Hongqiao International Airport and Hongqiao Train Station, as well as the National Conference and Exhibition Centre (Shanghai) and the Shanghai Qingpu Industrial Zone. Enjoy good connections to all of Shanghai's key areas and shop till you drop with fantastic shopping areas close by.

Rest and relax in a stylish guest room or upgrade to a suite for even more space. Each room features modern conveniences including a 43-inch LED TV, separated working station with comfortable ergonomic chair. Refresh in the spacious bathroom with a rainforest shower.

Complimentary WiFi is available throughout the hotel and we offer flexible meeting space for a range of events.

**It takes 15 minutes to the exhibition venue by taxi. Taxi fare is around RMB 20.**

**70 minutes from Pudong Int'l Airport and 20 minutes from Hongqiao Int'l Airport by car.**

**11. Yuloon Hotel**



**6699 Zhongchun Road, Shanghai**



The Yuloon Hotel (Yuelong Jiudian) is conveniently located in historic Qibao, just a ten-minute drive from Hongqiao International Airport. This Shanghai hotel houses a pillarless banquet hall covering an area of 280 square meters. For fun, guests can rejuvenate in the hotel spa, enjoy massages in a private room in the massage center, and exercise in the fitness center. Guests also often enjoy live music performed by foreign bands in lobby lounge.

**It takes 20 minutes to the exhibition venue by taxi. Taxi fare is around RMB 35.**

**60 minutes from Pudong Int'l Airport and 25 minutes from Hongqiao Int'l Airport by car.**

**12. Radisson Exhibition Shanghai Hotel**



**1550 Middle Xinfu Road, Shanghai**



Located in the Qingpu District of Shanghai, the Hotel is your gateway to one of China's most dynamic cities. Experience the rich history and culture of Shanghai as you enjoy amenities like free high-speed Internet, 24-hour concierge service and a fitness center at our modern hotel. Whether you're here for work or fun, you are never far from the heart of Shanghai. Business travelers enjoy our hotel's numerous meeting rooms as well as our proximity to the National Exhibition & Convention Center and nearby industries.

**It takes 20 minutes to the exhibition venue by taxi. Taxi fare is around RMB 35.**

**90 minutes from Pudong Int'l Airport and 45 minutes from Hongqiao Int'l Airport by car.**

**13. Mercure Shanghai Hongqiao South**



**3069 Hongxin Road, Shanghai**



The Mercure Shanghai Hongqiao South is one of the newest hotels in Shanghai, having opened in 2017. Just a short distance from Caohejing Development Zone (3km), and featuring Free in-room Wi-Fi, this hotel presents a great option. With Shanghai Hongqiao International Airport just 8km away and Shanghai Hongqiao Railway Station only 10km away, transportation is very convenient. In addition, Xingzhong Road Metro Station is just a short walk away. Guests looking to keep in shape can pay a visit to the gym. Business travelers are invited to make the most of the meeting rooms. A concierge is on hand to assist with any inquiries.

This Shanghai hotel features free parking on site. When it comes to Shanghai hotels, the Mercure Shanghai Hongqiao South is highly regarded for its excellent facilities. This hotel is a popular accommodation for guests traveling for business.

**It takes 30 minutes to the exhibition venue by taxi. Taxi fare is around RMB 40.**

**60 minutes from Pudong Int'l Airport and 20 minutes from Hongqiao Int'l Airport by car.**

**14. Grand Mercure Hongqiao Shanghai**



**369 Xianxia Road, Shanghai**



The Grand Mercure Hongqiao Shanghai (Hongqiao Meijue Jiudian) is located in the center of Shanghai's western Hongqiao District. The hotel is located between stations on Shanghai Metro Lines 2 and 10. Guestrooms at the Grand Mercure offer microwaves, satellite flatscreen TVs, minibars and in-room safes. In addition, all rooms come with fully-equipped kitchens or kitchenettes as well as balconies. The hotel's international food and beverage experience includes the contemporary Chinese restaurant offering Cantonese cuisine and the L'Atrium restaurant, which offers international cuisine with a French touch, featuring international breakfasts, themed buffets, French fusion a la carte services and a hand-picked selection of wines. Le 98 Lounge provides different types of cocktails and a selection of seasonal drinks. A fitness center, massage center and sauna are also available for guests looking to unwind.

**It takes 35 minutes to the exhibition venue by taxi. Taxi fare is around RMB 50.**

**60 minutes from Pudong Int'l Airport and 30 minutes from Hongqiao Int'l Airport by car.**

## **HOTEL INFORMATION**

**Deadline: February 9<sup>th</sup>, 2018**

No.	Category	Name of Hotel	Type of Room	Daily Room Rate	Breakfast	Distance from Hotel to Venue
1	5 Star	InterContinental Shanghai NECC	Superior Single Room	RMB1,580+16.6% <u>(Free Internet)</u>	One	5 minutes on walk
			Superior Twin Room	RMB1,730+16.6% <u>(Free Internet)</u>	Two	
2	5 Star	Sofitel Shanghai Hongqiao	Superior Single/Twin Room	RMB 900 net <u>(Free Internet)</u>	One / Two	7minutes By taxi
3	5 Star	MiniMax Premier Hotel Shanghai Hongqiao	Deluxe Single / Twin Room	RMB 650 net <u>(Free Internet)</u>	One / Two	20 minutes By taxi
4	5 Star	Renaissance Yangtze Shanghai Hotel	Deluxe Single Room	RMB 901+16.6% <u>(Free Internet)</u>	One	35 minutes By taxi
			Deluxe Twin Room	RMB 987+16.6% <u>(Free Internet)</u>	Two	
5	5 Star	Hua Ting Hotel & Towers	Deluxe Single/Twin Room	RMB 708+16.6% <u>(Free Internet)</u>	One / Two	40 minutes By taxi
6	4 Star	Courtyard by Marriott Hongqiao	Deluxe Single/Twin Room	RMB 700 net <u>(Free Internet)</u>	One / Two	5 minutes By taxi
7	4 Star	Hyatt Place Shanghai Hongqiao CBD	Hyatt Place Single Room	RMB 700 +15% <u>(Free Internet)</u>	One	7minutes By taxi
			Hyatt Place Twin Room	RMB 780 +15% <u>(Free Internet)</u>	Two	
8	4 Star	Howard Johnson Hongqiao Airport Hotel	Deluxe Single/Twin Room	RMB 700 net <u>(Free Internet)</u>	One / Two	10 minutes By taxi
9	4 Star	Holiday Inn Shanghai West	Superior Single / Twin Room	RMB 730 net <u>(Free Internet)</u>	One / Two	15 minutes By taxi
10	4 Star	Hilton Garden Inn Shanghai Hongqiao	Garden Single / Twin Room	RMB 650 net <u>(Free Internet)</u>	One / Two	15 minutes By taxi
11	4 Star	Yuloon Hotel	Superior Single / Twin Room	RMB 530 net <u>(Free Internet)</u>	One / Two	20 minutes By taxi
12	4 Star	Radisson Exhibition Shanghai Hotel	Superior Single / Twin Room	RMB 650 net <u>(Free Internet)</u>	One / Two	20 minutes By taxi
13	4 Star	Mercure Shanghai Hongqiao South	Superior Single / Twin Room	RMB 500 net <u>(Free Internet)</u>	One / Two	30 minutes By taxi
14	4 Star	Grand Mercure Hongqiao Shanghai	Superior Single / Twin Room	RMB 800net <u>(Free Internet)</u>	One / Two	35 minutes By taxi

**Remarks:**

- All hotel bookings are subject to availability. Please submit your Reservation Form to **Shanghai Vision Expo & Meeting Solutions Co., Ltd.** on or before **February 9<sup>th</sup> 2018** should you wish to make your hotel reservation. Reservation made after the deadline can not be guaranteed.
- Cancellation must be made in writing and **7 days** prior to arrival. **3 days** advance notice is required to modify a confirmed reservation. Late cancellation will cause a penalty of one night room charge.
- If the guest is a “no show” on the arrival day, the hotel will charge one night of room rental as the “no show” penalty.
- Cancellation or modification for **Intercontinental Shanghai NECC** must be made in writing and **21 (twenty-one) days** prior to arrival. Late cancellations or modification will cause a penalty of **1 (one) night of room amount due**.
- Any cancellation and modification for **Intercontinental Shanghai NECC** after **14 (fourteen) days** prior to arrival date will cause **full period of room rate** as penalty.
- Once you have submitted your hotel reservation form to **Shanghai Vision Expo & Meeting Solutions Co., Ltd.**, a hotel booking confirmation will be sent to you either by fax or email. Credit card is required to guarantee the booking. On the arrival day, guests should proceed to the hotel reception counter to check in. All room rental charges plus all incidental charges must be settled upon check out at the hotel cashier counter.

## HOTEL BOOKING FORM

**Deadline: February 9<sup>th</sup>, 2018**

<b>*Title:</b>	<input type="checkbox"/> Mr. <input type="checkbox"/> Ms. <input type="checkbox"/> Mrs.
<b>*Company Name:</b>	<input style="width: 100%;" type="text"/>
<b>*Guest Name:</b>	Surname: <input style="width: 80%;" type="text"/>
	First Name: <input style="width: 80%;" type="text"/>
<b>*Official Hotel Recommend</b>	<input type="checkbox"/> InterContinental Shanghai NECC
	<input type="checkbox"/> Sofitel Shanghai Hongqiao
	<input type="checkbox"/> MiniMax Premier Hotel Shanghai Hongqiao
	<input type="checkbox"/> Renaissance Yangtze Shanghai Hotel
	<input type="checkbox"/> Hua Ting Hotel & Towers
	<input type="checkbox"/> Courtyard by Marriott Hongqiao
	<input type="checkbox"/> Hyatt Place Shanghai Hongqiao CBD
	<input type="checkbox"/> Howard Johnson Hongqiao Airport Hotel
	<input type="checkbox"/> Holiday Inn Shanghai West
	<input type="checkbox"/> Hilton Garden Inn Shanghai Hongqiao
	<input type="checkbox"/> Yuloon Hotel
	<input type="checkbox"/> Radisson Exhibition Shanghai Hotel
	<input type="checkbox"/> Mercure Shanghai Hongqiao South
	<input type="checkbox"/> Grand Mercure Hongqiao Shanghai
<b>*Room Type:</b>	<input type="checkbox"/> Single <input type="checkbox"/> Twin
<b>*Breakfast:</b>	<input type="checkbox"/> One <input type="checkbox"/> Two
<b>*Arrival Date:</b>	<input style="width: 100%;" type="text"/>
<b>*Departure Date:</b>	<input style="width: 100%;" type="text"/>
Special Requirements: (Special requests are not guaranteed)	<input type="checkbox"/> Smoking <input type="checkbox"/> Non-smoking <input type="checkbox"/> Early Arrival <input type="checkbox"/> Late Departure
Hotel Limo Airport Pickup Service: (Additional service charges apply)	<input type="checkbox"/> Yes    Arrival Flight / Time: <input style="width: 80%;" type="text"/>
	<input type="checkbox"/> Yes    Departure Flight / Time: <input style="width: 80%;" type="text"/>
<b>*Type of Credit Card:</b>	<input type="checkbox"/> Visa <input type="checkbox"/> Master <input type="checkbox"/> Amex <input type="checkbox"/> JCB
<b>*Credit Card Number:</b>	<input style="width: 100%;" type="text"/>
<b>*Expiry Date:</b>	<input style="width: 100%;" type="text"/>



✧ Please read the hotel information and notice carefully when fill in this reservation form. \* is compulsory fields.

<p><b>Please send this form to:</b> Shanghai Vision Expo &amp; Meeting Solutions Co., Ltd.</p> <p><b>Attn:</b> Ms. Jenny Zhang / Mr. Billy Xu Tel: (86 21) 5481 6051 / 5481 6052 Fax: (86 21) 5481 6032 Email: <a href="mailto:jenny@shanghai-vision.com">jenny@shanghai-vision.com</a> <a href="mailto:billy@shanghai-vision.com">billy@shanghai-vision.com</a></p> <p><b><u>PLEASE MAKE A COPY FOR YOUR RECORD</u></b></p>	<b>*Contact Person:</b> <input type="text"/>
	<b>*Email:</b> <input type="text"/>
	<b>*Tel:</b> <input type="text"/> - <input type="text"/> - <input type="text"/> Country Code- Area Code-Tel No.
	<b>*Fax:</b> <input type="text"/> - <input type="text"/> - <input type="text"/> Country Code- Area Code-Fax No.
	<b>Company:</b> <input type="text"/>
	<b>Address:</b> <input type="text"/>
	<b>Booth No.:</b> <input type="text"/>
	<b>*Signature:</b> <input type="text"/> <b>Date:</b> <input type="text"/>